



BRAVE NEW WORLD

Gruppo pubblico

Discussione

post di Jason

Membri

Eventi

Video

Foto

File

Cerca in questo gruppo 🔍

Collegamenti rapidi

Isritto ▾
✓ Notifiche
➦ Condividi
⋮



Jason Dang Hannsz

28 gennaio 2016

This is an intellectual debate group. If you have to insult someone to make your point you will be removed. Post your evidence, proofs and photos, videos and memes Be civil, no name calling no disrespect! Do not block admins!

Some FAQ.

1. Can you fall off the edge?

No, you can't fall off the edge, there is an ice wall 100's of feet high in some places, at the edge of our habitat. Either the edge stops at a thermal barrier, where matter is too cold for life, Or there is a possible infinite plane beyond this edge. Some theorize a dome incassing.. Earth is not a planet. Earth is a plane. A plane of existence, a realm.

2. Do photos from space prove Earth is a sphere?

All photos of Earth from space are fake.

<https://www.youtube.com/watch?v=QciLVJZNq4c>

3. Why the lie?

Check Out This Video:

<https://www.youtube.com/watch?v=qjCB0gniP8>

4. How does gravity work on the FE?

Gravity does not exist as a force, gravity is not even a primary, or secondary, SI Unit of measurement, it's pseudo-meta science. Gravity as you should know it, is a tool of calculation, a derivative in reference to the Metric System, for calculating measurements, measuring the effects of the primary SI Unit translations of the electromagnetic forces.

Gravity has been Personified into a Force. Any "Science utilizing Gravity as a Force Attribute.. is Pseudoscience.. Meta-Physical Philosophy.

Official - Standard SI Units of Physics

<http://physics.nist.gov/Pubs/SP330/sp330.pdf>

In this article CERN has omitted gravity.

<http://home.web.cern.ch/about/physics/standard-model>

Gravity - Properly Defined on Flat Earth -

The calculated "Force of Gravity" Requires Relativity Mass calculations between two bodies.. Therefore the "Gravity" is the attractive force based on an SI Units (International System of Units) of Measurement.. of a relative mass.

The following further defines the Metric of Gravity in an example based on the Gravity of Hydrogen:

You measured in mole relative to the Avogadro Constant, Carbon-12. The mole is a unit of measurement for amount of substance, equal in mass (in grams) to the combined mass (in amu) of the atoms of the constituent molecules of the substance multiplied by Avogadro's number. The Mass of 1 Hydrogen, with a proton(+) and electron(-) is 0.01 mole.

For example, the chemical equation $2 H_2 + O_2 \rightarrow 2 H_2O$ implies that .2 mol of dihydrogen (H2) and .1 mol of dioxygen (O2) react to form .2 mol of water (H2O). The mole may also be used to express the number of atoms,

AGGIUNGI MEMBRI

+ Inserisci il nome o l'indirizzo e-mail...

MEMBRI

9266 membri (1 nuovo)

DESCRIZIONE

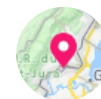
BRAVE NEW WORLD . . .

Please join Here in an effort to rebuild... [Altro...](#)

TAG

[Earth science](#) · [Flower of Life](#) · [Life on Earth](#) · [More](#)

LUOGHI



Cern, Geneve, Switzerland

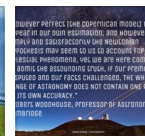
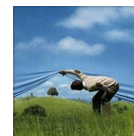
CREA NUOVI GRUPPI

Con i gruppi è più semplice che mai condividere contenuti con amici, familiari e colleghi.

[Crea gruppo](#)

FOTO RECENTI DEL GRUPPO

[Mostra tutto](#)



GRUPPI SUGGERITI

[Mostra tutti](#)

ions, or other elementary entities in a given sample of any substance. The number of molecules in a mole (known as Avogadro's constant) is defined such that the mass of one mole of a substance, expressed in grams, is equal to the mean molecular mass of the substance. For example, the mean molecular mass of natural water is about 18.015, therefore, one (1) mole of water has a mole mass of about 18.015 mole grams.

So 1 hydrogen atom = 1.008 amu of mass. 1 mole of hydrogen = $\{1.008 \times [6.022 \ 141 \ 29(27) \times 10^{23}]\}$ amu = 1.008 grams. 1 hydrogen atom = $\{1.008 / [6.022 \ 141 \ 29(27) \times 10^{23}]\}$ grams.

Unless it's an ion of Hydrogen with no Electron (-) making it a Cation having a +1 charge.. The mass of one mole of a substance depends not only on its molecular formula, but also on the proportion of the isotopes of each element present in it. The Hydrogen Cation(+) still has FORCE, yet it m is a Relative Gravity Metric calculation is less than (0).. So the matrix of gravity can be zero, or even a counter force, a negative gravity metric. That force being Energy we call "Electric Charge"of three states (+) 😊 (-)

To calculate the Gravity of a Hydrogen atom you can do three equations with Relative SI Units of Metric equivalent conversion depending on the state of Hydrogen. So 1 Hydrogen can have three possible gravitational states.

The key here is Gravity is a MEASUREMENT..

Based on SI units of Relative MASS.. and Mole potential, the MASS of one Hydrogen is interdependent on the CHARGE of it's Atomic Mass. The independent stand alone force of the Hydrogen elements Atomic Mass is it's Electric Charge state. and requires no Si Unit of measurement.

So you demonstrated that Gravity is Calculation of Forces in SI Units that are Electric Charge based calculations.

which is Carbon Isotope based SI Measurement... Making a "Gravity" Standard Equivalent measurement constant of 6.67408 Relative to Carbon(12).

So in Conclusion..

Yes Gravity 'Exists' as a standardized system of relativity measurement, relative to the Atomic Mass forces of Electric Charge, and the Magnetic Properties are interdependent on the State of the Element.

The Electromagnetic Spectrum. Electro = Electron exchange. Magnetic = Attraction between the negative and positive. Spectrum - The wavelengths of energy in different concentrations and densities.

So we are in a sea of fluctuating energy. If you have an empty space that is a 'negative body' and if you have a density of energy such as an electron, 'positive body' that has a higher density of energy than the negative body, it is drawn towards other higher densities of energy as its actually searching for the path of least resistance.

Two positive bodies are 'attracted' to each other as the higher energy density of both of them creates a larger negative entropy between them and falling into each other is the path of least resistance.. As the two higher energy densities approach and come closer that will increase momentum. As they reach maximum velocity and maximum energy potential with the minimum amount of space between them, they also reach maximum energy potential.

Upon approach or energy maximum the energy looks to continue on its path of least resistance in an altered direction reactionary to the combined forces. This is the 'Dynamics' The 'Dynamo' of positive and negative bodies always attracting and approaching and colliding and moving.

The combined Electrodynamic Electromagnetic Spectrum creates a Quantum flow of entanglement. So like if two electrons approach each other and their energy causes them to veer around each other than the path of least resistance is for them to spin or rotate around each other.

The centripetal force of the rotation gives of a higher vibration shell of energy from the combined forces. The two positive bodies rotating around each other in an orbital free fall have now formed a new negative entropy point in between them out of dynamic equilibrium, and the other shell of higher energy potential causes a torus effect on the central negative space where energy is drawn towards falling to the new center of negative space.

This shelling of energy is what everyone refers to as 'gravity' So we as

people are a giant massive wad of structured electrodynamic energy potential. We have a greater she'll of energy vibrating around our central mass. So we are attracted to the earth's surface through this 'pull' of electrodynamic potential of our Electromagnetic Spectrum of energy vibration searching to fill the gaps of least negative entropy. 'Gravity' is not a force all its own but a Quantum byproduct of electromagnetism.

This is Coulombs law.

<http://www.physicsclassroom.com/.../es.../Lesson-3/Coulomb-s-Law>

5. How does the sun work on the FE?

The sun's diameter is 33 miles and altitude is approx. 3000 miles. The sun works like a spotlight shining on about half of the earth while the parts that don't get light is night. The sun orbits in circles around the flat earth. The moon is the same size and has a slower orbit when the moon gets in front of the sun is how the solar eclipse works.

<https://www.youtube.com/watch?v=XugZ9wGnk9M&feature=youtu.be>

<https://www.youtube.com/watch?v=GY0xhUOL3vM&app=desktop>

<https://www.youtube.com/watch?v=y5knH393h1c>

6. Do ships on the horizon dip below the horizon?

Ships on the horizon get smaller as they get further away they do not go over the horizon. You can zoom in with a camera or binoculars and still see them.

<https://www.youtube.com/watch?v=VFhhCYYkLw>

7. Do toilets flush the opposite direction in the southern hemisphere?

Toilets flush the way they were designed to flush. Has nothing to do with where they are flushed.

8. How does the lunar eclipse work on FE?

"The several cases above advanced are logically destructive of the notion that an eclipse of the moon arises from a shadow of the earth. As before stated, the earth is proved to be a plane, without motion, and always several hundred miles below the sun and moon, and cannot, by any known possibility come between them. It cannot therefore intercept the light of the sun, and throw its own shadow upon the moon. If such a thing were a natural possibility, how could the moon continue to shine during the whole or any considerable part of the period of its passage through the dark shadow of the earth? Refraction, or what has been called "Earth-light," will not aid in the explanation; because the light of the moon is at such times "like the glowing heat of fire tinged with deep red." "Reddish is not the word to express it, it was red- red hot." "The reddish light made it, seem to be on fire." "It looked like a fire smouldering in its ashes." "Its tint was that of red-hot copper." The sunlight is on an entirely different color to that of the eclipsed moon; and it is contrary to know optical principles to say that light when refracted or reflected, or both simultaneously, is thereby changed in color. If a light of a given color is seen through a great depth of a comparatively dense medium, as the sun is often seen in winter through the fog and vapor of the atmosphere, it appears of a different color, and generally of such as that which the moon so often gives during a total eclipse; but a shadow cannot produce any such effect, as it is, in fact, not an entity at all, but simply the absence of light.

From the facts and phenomena already advanced, we cannot draw any other conclusion than that the moon is obscured by some kind of semi-transparent body passing before it; and through which the luminous surface is visible; the luminosity changed in color by the density of the intervening object. This conclusion is forced upon us by the evidence but is not a reflector of the sun's light, but absolutely self-luminous. Although this admission is logically compulsory, it will be useful and strictly Zetetic to collect all the evidence possible which bears upon it.

If light of any given colour is placed in the same way, the same colour of light will be reflected."

~Samuel Rowbotham, Zetetic Astronomy

<https://www.youtube.com/watch?v=kGGuxxOV964>

9. What about the Coriolis effect?

Coriolis effect

The Coriolis effect Is of the electromagnetic force, not from the rotation of the Earth.

If the world is flat and electromagnetism is the underlying force holding everything together, than a 'strait' line magnetically would follow the curve.

North will always be North of an Eastern arch tangent. The electromagnetism effects everything molecule in the euclidean space locking everything in the same magnetic revolution. You can think of it as a needle on a record. Does the needle stay on the record continuing on the curve? Or does the needle slide off tangent?

It also reinforces the Coriolis effect, as it can be demonstrated by the flight of a bullet.

The electromagnetism is pulling ionically or giving charge to the atoms of the bullet when traveling in the Eastern Direction, and therefore gives rise to the bullet with electromagnetic additive energy giving advantage to the rotation. While creating drag to the west.

The current theory is wrong on a spherical Earth. If the bullet travels East, the rotation of the Earth to the East should decrease the distance traveled for the bullet as the earth travels forward in the same direction as the bullet. However we see a bullet traveling East bound to actually Rise higher over a greater distance.

The current Coriolis theory claims it is the curvature of the Earth that explains this plus rotation.

However the curvature would be consistent in the current theory, so a bullet traveling in the western direction should fly further faster, traveling counter to the rotation. But, it doesn't..it drops with the drag of the ionic flow when traveling west.

If you fire a bullet North or South you get the cross arch Coriolis tangent you are looking for with the strait road theory. A bullet traveling North-bound goes strait and the EM field rotates underneath it. The general relativity of the bullet traveling strait appears to arch counter to the FE Electromagnetic pull of the toroidal rotation of the electro-magnetic force. 10. What about the Foucault pendulum?

Foucault pendulum

The Foucault pendulum measures the electro-magnetic force double torus rotation.

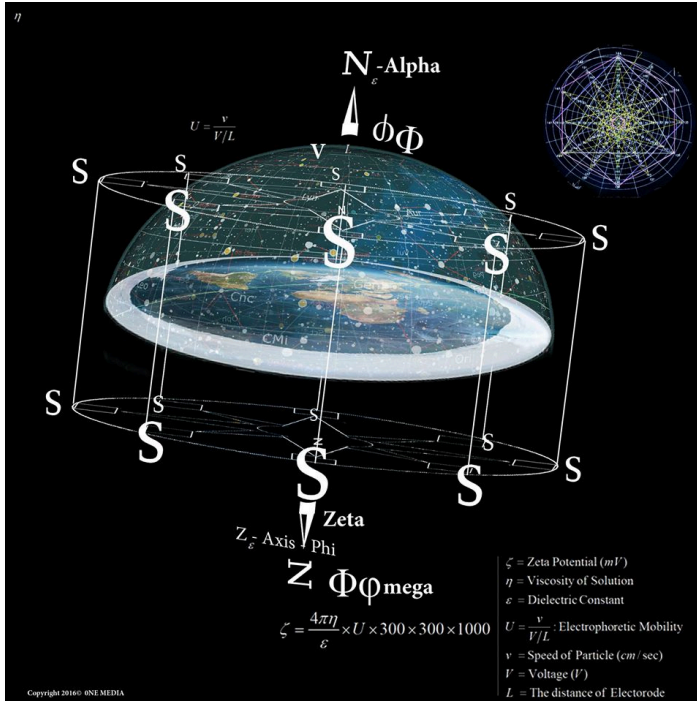
The Foucault pendulum travels 11degrees per hour. The sun is traveling at 15 degrees per hour.

The Foucault pendulum is rotating electro-dynamically as its mass of atoms is pulled at a constant by the square root of the Sun's rotation plus $\pi + \Phi$ which gives you the drag variance.

You can verify this by calculating the variance in a full Foucault pendulum 'day' which takes ~32.7 hours multiply $24 \times \Phi$ 1.617 will give you the reminder of ~8.8, the time variance between a solar day and the Foucault pendulum day (8.7)+ the Coriolis Effect for a total of 8.857 the atomic time calculation. Which is really just an addition of Φ to the 8.7 total. For ~8.8.

Keep in mind these calculations are supposed to be Cubic Euclidean Geometry equations and have been simplified for ease of comprehension."

If light of any given color is placed in the same way, the same color of light will be reflected." in the Eastern Direction, and therefore gives rise to the bullet with electromagnetic additive energy giving advantage to the rotation. While creating drag to the west.

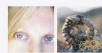


Mi piace Commenta Condividi



Ettore Còntini Jason, can I Post a translated version of this Post in my Italian Group?

La Società della Terra Piatta (=Flat Earth Society)
<https://www.facebook.com/groups/125739867173?>



✓ **Iscritto**

Mi piace · Rispondi · Rimuovi anteprima · 2 · 12 dicembre 2016 alle ore 1:36



Ettore Còntini Of course "Courtesy of Mr. Jason Dang"

Mi piace · Rispondi · 1 · 12 dicembre 2016 alle ore 2:17



Jason Dang Hannsz Yes you may 😊

Mi piace · Rispondi · 13 dicembre 2016 alle ore 13:38